



# HAY Contract Catalogue

HAY





# INDEX

 CLICK

HAY INTRO

SUSTAINABILITY

SEATING

TABLES

LOUNGE

NEW ORDER

WARDROBE

OUTDOOR

LIGHTING

TOOLS





## OUR VISION

In 2002, HAY was established as a new kind of design company in Denmark. Motivated by the certainty that good design is everyone's right, HAY set out to innovate new ways to answer the ever-evolving needs of the modern world – but at a more accessible price point than industry standards.

Co-founders and Creative Directors Mette and Rolf Hay committed to working with their generation's best designers from all over the world to create high-quality products that would be available to a wide audience.

This founding principle has always been HAY's DNA, and it remains at the core of the company's culture today.

## AT A GLIMPSE

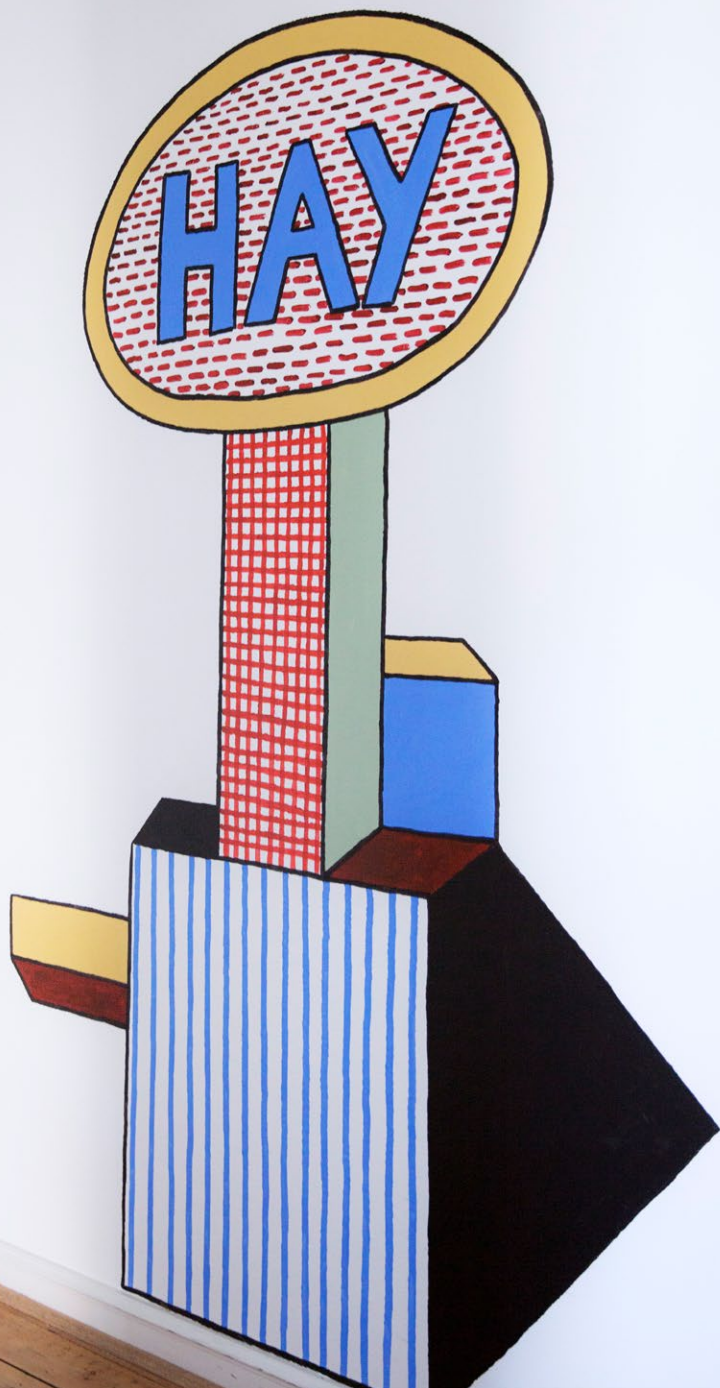
In 2003, HAY's first furniture collection launched at IMM Cologne, and the first HAY shop opened in Copenhagen.

Today, there are 31 HAY stores throughout Europe, Asia, and USA.

In 2019, US-based designer and furniture manufacturer Herman Miller Inc. acquired a majority share of the company and the North American distribution rights. Rolf and Mette Hay retain their ownership of the remaining part.

US stores have opened in Portland, Oregon; Chicago, Illinois; and Costa Mesa, California, with more stores to come.









## **SUSTAINABLE STRATEGY**

At HAY, we work to design and produce long-lasting, functional products that people want to live with for many years. Our commitment to reduce our environmental footprint also includes using resources in a sustainable way, so we strive to utilize the most efficient and environmentally conscious methods, tools, and materials available.

We recognise that our actions have a significant environmental impact, and we therefore take our responsibility to contributing to a greener future seriously. We aim to be climate positive in everything that we do, with focus on the three areas below:

**SUSTAINABLE DESIGN**  
**DURABLE PRODUCTS**  
**LOCAL PRODUCTION**

[LINK TO ENVIROMENTAL PROFILE](#)

[LINK TO SUSTAINABILITY MANIFESTO](#)

## ECO CERTIFICATIONS

The Eco certification ensures that the product is designed so that its parts can be taken apart and recycled after use. The Eco certification considers the overall environmental impact of a product from raw materials to production, use, disposal, and recycling. Quality requirements ensure the product is long lasting. Strict demands on chemicals used in products ensure the health of the consumer and the people who manufacture the products. The Eco certification also has a third-party validation that all documentation is validated and information is reviewed.

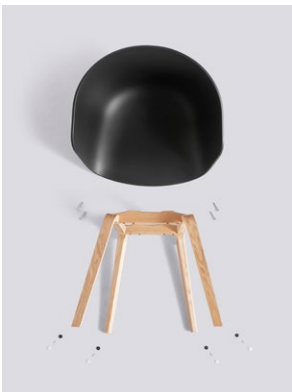
We aim to have more Eco-certified products in the future.



Arbour Eco is certified with the Nordic Swan Ecolabel



About A Eco Collection is certified with the EU Ecolabel



## FSC CERTIFICATION

HAY is FSC™ certified. FSC™ (Forest Stewardship Council) is an international non-profit organisation and a labelling system for wood and paper that originate from sustainable forests. HAY has received the FSC™ certificate for a number of products. We are continually working on increasing the number of FSC™ certified products in our wooden-furniture collection.

### FSC™-CERTIFIED FURNITURE

AAC & AAS Eco	Halftime	Result Chair
Arbour	J41, J42, J77	Soft Edge 10 Sled
Bernard	Mags & Mags Soft	Triangle Leg
CPH 30 Extendable*	Neu 12 Bar Stool	Woody
Dorso	Pandarine	
Eiffel	Petit Standard	



The mark of  
responsible forestry

\*Only laminate and veneer tabletops







## HAY AND THE CONTRACT MARKET

HAY has always worked closely with the contract market, supplying affordable, durable, highly functional products to clients across the public sector, from universities to hospitals, offices, cafes, and hotels.

We have strong relationships with our clients, and pursue regular collaborations with international names including

**Novo Nordisk, LEGO, Danske Bank, Copenhagen University, Aarhus Airport, Comwell Hotels, Joe & the Juice, Bestseller, Citroën, MoMA, Microsoft, Google, Credit Agricole, Post Nord, Cobe Architects, WeWork**

[LINK TO CASES](#)



SEAT

TING



MEETING CHAIRS

CLICK



Revolt



AAC 10 / 11



AAC 14 / 15



AAC 20 / 21



AAC 21 Soft



AAC 22 ECO



AAC 22 / 23



AAC 23 Soft



AAC 24 / 25



AAC 25 Soft



AAC 26 / 27



AAC 27 Soft



AAC 50 / 51



AAC 52 / 53



AAC 53 Soft



AAC 121



AAC 121 Soft



AAC 121 Soft Duo



AAC 123



AAC 123 Soft



AAC 123 Soft Duo



AAC 127



AAC 127 Soft



AAC 127 Soft Duo



AAC 153



AAC 153 Soft



AAC 153 Soft Duo



Neu 10



Neu 12



Soft Edge 12  
Upholstery



J41



J42



**STACKING CHAIRS**

CLICK



Petit Standard



AAC 08 / 09



AAC 16 / 17



AAC 18 / 19



Soft Edge P10 Sled



Soft Edge 10 Sled



Soft Edge P10



Soft Edge 10



Soft Edge 12



Soft Edge 12  
with linking device



Halftime



Halftime  
with linking device

**OFFICE CHAIRS**

CLICK



AAC 51



AAC 53



AAC 53 Soft



AAC 153



AAC 153 Soft



AAC 153 Soft Duo

**CANTEEN & RESTAURANT CHAIRS**

CLICK



Revolt



Petit Standard



Soft Edge P10 Sled



Soft Edge 10 Sled



Soft Edge P10



Soft Edge 10



Soft Edge 12



Soft Edge 12 Uph.



Soft Edge 70 Stool



Soft Edge 72 Stool



Halftime



Result Chair



Result Chair Uph.



AAC 08



AAC 09



AAC 10



AAC 11



AAC 12 Eco



AAC 12



AAC 13



AAC 16



AAC 17



AAC 22 Eco



AAC 22



AAC 23



AAC 23 Soft



AAC 26



AAC 27



AAC 27 Soft



AAC 123



AAC 127



Neu 12



J41



J42



J77



J104



J110



Élémentaire

- SEATING OVERVIEW -

**BAR STOOLS**

CLICK



AAS 32 ECO



AAS 32 / 33



AAS 38 / 39



Soft Edge 10 / P10  
Bar Stool



Soft Edge 10 / P10  
Bar Stool Uph.



Soft Edge 30



Soft Edge 30  
Uph.



Soft Edge 32



Soft Edge 32  
uph.



Revolver



Cornet



Neu 12 Bar Stool



Hee Bar Stool



Palissade  
Bar Stool

**BENCHES**

CLICK



CPH Deux 215



Pyramid bench 11



Pyramid bench 12



Triangle leg bench

**EXTRA**

CLICK



Chair trolley



Floor linking device for  
AAC 08, AAC 09, Hee



Linking device for  
AAC 16, 17, 18, 19



Linking device for  
Soft Edge 10





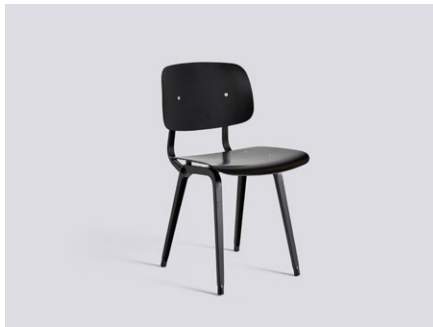
## REVOLT



Revolt  
[Link to product information](#)



Revolt  
[Link to product information](#)



Revolt  
[Link to product information](#)



- MEETING CHAIRS -

## AAC 10 / AAC 11



AAC 10  
[Link to product information](#)



AAC 11  
[Link to product information](#)







## AAC 14 / AAC 15



AAC 14  
[Link to product information](#)



AAC 15  
[Link to product information](#)



## AAC 20 / AAC 21



AAC 20

[Link to product information](#)



AAC 21

[Link to product information](#)



## AAC 21 SOFT



AAC 21 Soft  
[Link to product information](#)



AAC 21  
[Link to product information](#)







- MEETING CHAIRS -

## AAC 22 ECO



AAC 22 ECO  
[Link to product information](#)



## AAC 22 / AAC 23



AAC 22

[Link to product information](#)



AAC 23

[Link to product information](#)



## AAC 23 SOFT



AAC 23 Soft  
[Link to product information](#)



AAC 23 Soft  
[Link to product information](#)







## AAC 24 / AAC 25



AAC 24

[Link to product information](#)



AAC 25

[Link to product information](#)



## AAC 25 SOFT



AAC 25 Soft  
[Link to product information](#)



AAC 25 Soft  
[Link to product information](#)



## AAC 26 / AAC 27



AAC 26

[Link to product information](#)



AAC 27

[Link to product information](#)





## AAC 27 SOFT



AAC 27 Soft  
[Link to product information](#)



AAC 27 Soft  
[Link to product information](#)



## AAC 50 / AAC 51



AAC 50

[Link to product information](#)



AAC 51

[Link to product information](#)







## AAC 52 / AAC 53



AAC 52

[Link to product information](#)



AAC 53

[Link to product information](#)



## AAC 53 SOFT



AAC 53 Soft  
[Link to product information](#)



AAC 53 Soft  
[Link to product information](#)



## AAC 121



AAC 121 Chair  
[Link to product information](#)



AAC 121 Soft Chair  
[Link to product information](#)



AAC 121 Soft Duo Chair  
[Link to product information](#)





## AAC 123



AAC 123 Chair  
[Link to product information](#)



AAC 123 Soft Chair  
[Link to product information](#)



AAC 123 Soft Duo Chair  
[Link to product information](#)





## AAC 127



AAC 127 Chair  
[Link to product information](#)



AAC 127 Soft Chair  
[Link to product information](#)



AAC 127 Soft Duo Chair  
[Link to product information](#)







## AAC 153



AAC 153 Chair  
[Link to product information](#)



AAC 153 Soft Chair  
[Link to product information](#)



AAC 153 Soft Duo Chair  
[Link to product information](#)



## NEU 10 / NEU 10 UPHOLSTERY



Neu 10  
[Link to product information](#)



Neu 10 Upholstery  
[Link to product information](#)



## NEU 12 / NEU 12 UPHOLSTERY



Neu 12  
[Link to product information](#)



Neu 12 Upholstery  
[Link to product information](#)





## SOFT EDGE 12 UPHOLSTERY



Soft Edge 12 Upholstery  
[Link to product information](#)



Soft Edge 12 Upholstery  
[Link to product information](#)



## J41



J41  
[Link to product information](#)



J41 with seat cushion  
[Link to product information](#)







## J42



J42

[Link to product information](#)



J42

[Link to product information](#)



## PETIT STANDARD



Petit Standard  
[Link to product information](#)



Petit Standard  
[Link to product information](#)



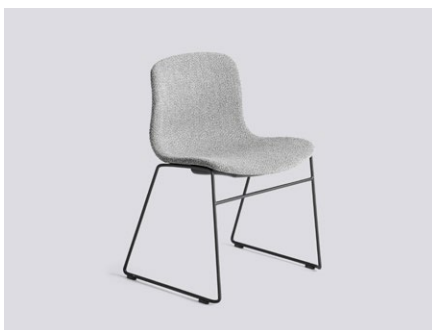
- STACKING CHAIRS -

## AAC 08 / AAC 09



AAC 08

[Link to product information](#)



AAC 09

[Link to product information](#)





- STACKING CHAIRS -

## AAC 16 / AAC 17



AAC 16

[Link to product information](#)



AAC 17

[Link to product information](#)



- STACKING CHAIRS -

## AAC 18 / AAC 19



AAC 18  
[Link to product information](#)



AAC 19  
[Link to product information](#)





## SOFT EDGE 10 SLED



Soft Edge 10 Sled  
[Link to product information](#)



Soft Edge 10 Sled Upholstery  
[Link to product information](#)



## SOFT EDGE P10 SLED



Soft Edge P10 Sled  
[Link to product information](#)



Soft Edge P10 Sled Upholstery  
[Link to product information](#)



## SOFT EDGE P10 / SOFT EDGE 10



Soft Edge P10  
[Link to product information](#)



Soft Edge 10  
[Link to product information](#)





- STACKING CHAIRS -

## SOFT EDGE 12



Soft Edge 12  
[Link to product information](#)



Soft Edge 12  
[Link to product information](#)



## SOFT EDGE 12 WITH LINKING DEVICE



Soft Edge 12 with linking device  
[Link to product information](#)



Soft Edge 12 with linking device  
[Link to product information](#)





## HALFTIME



Halftime  
[Link to product information](#)



Halftime Colour  
[Link to product information](#)



## HALFTIME WITH LINKING DEVICE



Halftime with linking device  
[Link to product information](#)



Halftime with linking device  
[Link to product information](#)





## AAC 51 / AAC 53



AAC 51

[Link to product information](#)



AAC 53

[Link to product information](#)





## AAC 53 SOFT



AAC 53 Soft  
[Link to product information](#)



AAC 53 Soft  
[Link to product information](#)



## AAC 153



AAC 153 Chair  
[Link to product information](#)



AAC 153 Soft Chair  
[Link to product information](#)



AAC 153 Soft Duo Chair  
[Link to product information](#)







## REVOLT



Revolt  
[Link to product information](#)



Revolt  
[Link to product information](#)



Revolt  
[Link to product information](#)



## PETIT STANDARD



Petit Standard  
[Link to product information](#)



Petit Standard  
[Link to product information](#)



## SOFT EDGE 10 SLED



Soft Edge 10 Sled  
[Link to product information](#)



Soft Edge 10 Sled Upholstery  
[Link to product information](#)





## SOFT EDGE P10 SLED



Soft Edge P10 Sled  
[Link to product information](#)



Soft Edge P10 Sled Upholstery  
[Link to product information](#)



## SOFT EDGE P10 / SOFT EDGE 10



Soft Edge P10  
[Link to product information](#)



Soft Edge P10  
[Link to product information](#)



Soft Edge 10  
[Link to product information](#)



Soft Edge 10  
[Link to product information](#)







## SOFT EDGE 12 / SOFT EDGE 12 UPHOLSTERY



Soft Edge 12  
[Link to product information](#)



Soft Edge 12 Upholstery  
[Link to product information](#)



## SOFT EDGE 70 / SOFT EDGE 72



Soft Edge 70  
[Link to product information](#)



Soft Edge 72  
[Link to product information](#)



## HALFTIME



Halftime  
[Link to product information](#)



Halftime Colour  
[Link to product information](#)





## RESULT CHAIR



Result Chair  
[Link to product information](#)



Result Chair with upholstery  
[Link to product information](#)



## AAC 08 / AAC 09



AAC 08  
[Link to product information](#)



AAC 09  
[Link to product information](#)







## AAC 10 / AAC 11



AAC 10  
[Link to product information](#)



AAC 11  
[Link to product information](#)



## AAC 12 ECO



AAC 12 Eco  
[Link to product information](#)



## AAC 12 / AAC 13



AAC 12  
[Link to product information](#)



AAC 13  
[Link to product information](#)





## AAC 16 / AAC 17



AAC 16  
[Link to product information](#)



AAC 17  
[Link to product information](#)



## AAC 22 ECO



AAC 22 Eco  
[Link to product information](#)







## AAC 22 / AAC 23



AAC 22  
[Link to product information](#)



AAC 23  
[Link to product information](#)



## AAC 23 SOFT



AAC 23 Soft  
[Link to product information](#)



AAC 23 Soft  
[Link to product information](#)



## AAC 26 / AAC 27



AAC 26  
[Link to product information](#)



AAC 27  
[Link to product information](#)





## AAC 27 SOFT



AAC 27 Soft  
[Link to product information](#)



AAC 27 Soft  
[Link to product information](#)





## AAC 123



AAC 123 Chair  
[Link to product information](#)



AAC 123 Soft Chair  
[Link to product information](#)



AAC 123 Soft Duo Chair  
[Link to product information](#)





## AAC 127



AAC 127 Chair  
[Link to product information](#)



AAC 127 Soft Chair  
[Link to product information](#)



AAC 127 Soft Duo Chair  
[Link to product information](#)



## NEU 12 / NEU 12 UPHOLSTERY



Neu 12  
[Link to product information](#)



Neu 12 Upholstery  
[Link to product information](#)



## J41 / J42



J41

[Link to product information](#)



J42

[Link to product information](#)





## J77 / J104 / J110



J77

[Link to product information](#)



J104

[Link to product information](#)



J110

[Link to product information](#)



## ÉLÉMENTAIRE CHAIR



Élétaire Chair  
[Link to product information](#)



Élétaire Chair  
[Link to product information](#)





- BAR STOOLS -

## AAS 32 ECO



AAS 32 ECO Low  
[Link to product information](#)



AAS 32 ECO High  
[Link to product information](#)



- BAR STOOLS -

## AAS 32 / AAS 33



AAS 32

[Link to product information](#)



AAS 33

[Link to product information](#)



- BAR STOOLS -

## AAS 38 / AAS 39



AAS 38

[Link to product information](#)



AAS 39

[Link to product information](#)





## SOFT EDGE 10 BARSTOOL



Soft Edge 10 Barstool  
[Link to product information](#)



Soft Edge 10 Barstool Upholstery  
[Link to product information](#)





## SOFT EDGE P10 BARSTOOL



Soft Edge P10 Barstool  
[Link to product information](#)



Soft Edge P10 Barstool Upholstery  
[Link to product information](#)





## SOFT EDGE 30 / SOFT EDGE 32



Soft Edge 30 Low  
[Link to product information](#)



Soft Edge 30 Upholstery High  
[Link to product information](#)



Soft Edge 32 Low  
[Link to product information](#)



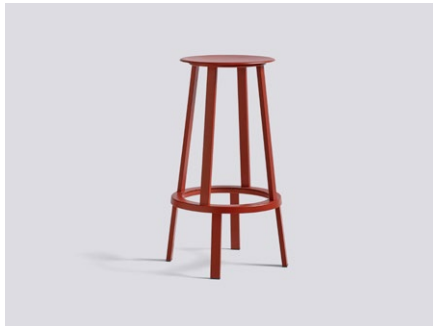
Soft Edge 32 Upholstery High  
[Link to product information](#)



## REVOLVER BAR STOOL



Revolver Bar Stool Low  
[Link to product information](#)



Revolver Bar Stool High  
[Link to product information](#)



## CORNET



Cornet Bar Stool Low  
[Link to product information](#)



Cornet Bar Stool High  
[Link to product information](#)





## NEU 12 BAR STOOL



Neu 12 Bar Stool  
[Link to product information](#)



Neu 12 Bar Stool Upholstery  
[Link to product information](#)



## HEE BAR STOOL



Hee Bar Stool Low  
[Link to product information](#)



Hee Bar Stool High  
[Link to product information](#)



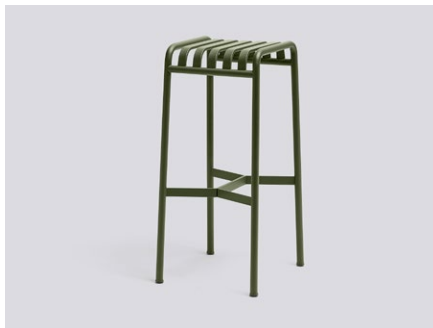




## PALISSADE BAR STOOL



Palissade Bar Stool  
[Link to product information](#)



Palissade Bar Stool  
[Link to product information](#)



Herman Miller  
A Way of Living

BRASK STUDIO VISITS V

## CPH DEUX 215



CPH Deux 215  
[Link to product information](#)



CPH Deux 215  
[Link to product information](#)



## PYRAMID BENCH



Pyramid Bench 11  
[Link to product information](#)



Pyramid Bench 12  
[Link to product information](#)





Creamier  
L'ART DE LA CUISINE

New York  
Basel  
Tokyo  
London  
Paris  
Aires

ANNIE  
LEIBOVITZ  
AT  
WORK



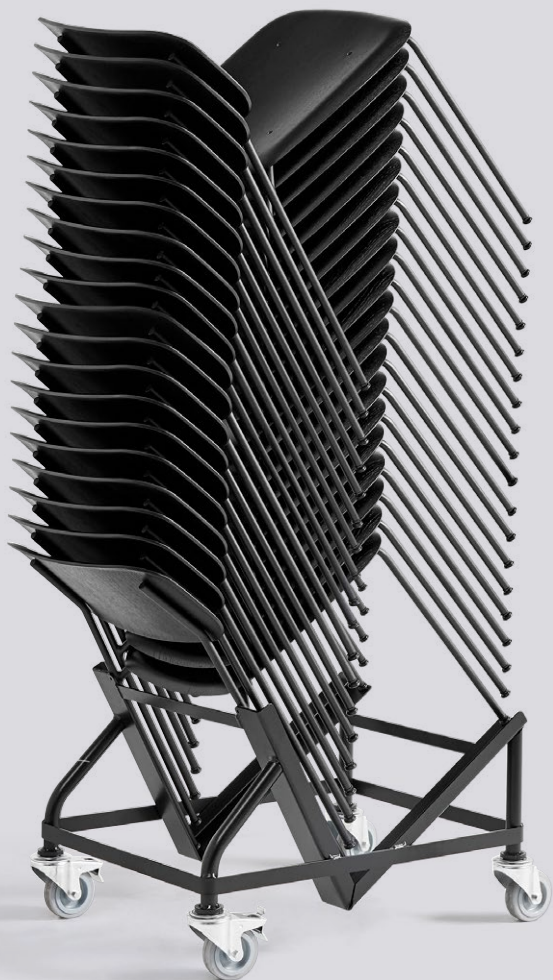
## TRIANGLE LEG BENCH



Triangle Leg Bench  
[Link to product information](#)



Triangle Leg Bench  
[Link to product information](#)



## CHAIR TROLLEY



Chair Trolley for AAC 08, 09  
[Link to product information](#)



Chair Trolley for AAC 16, 17, 18, 19  
[Link to product information](#)



Chair Trolley for Halftime  
[Link to product information](#)

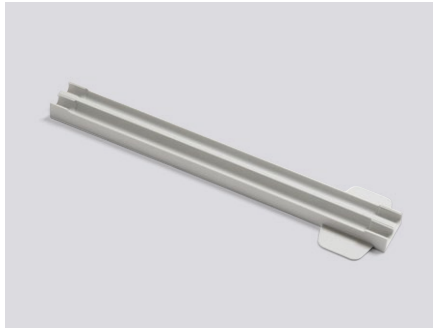


Chair Trolley for Soft Edge 10, 12  
[Link to product information](#)





## FLOOR LINKING DEVICE



Floor Linking Device for AAC 08, 09 & Hee  
[Link to product information](#)



Floor Linking Device for Aac 08, 09 & Hee  
[Link to product information](#)



## LINKING DEVICE



Linking device for AAC 16, 17, 18, 19  
[Link to product information](#)



Linking device for AAC 16, 17, 18, 19  
[Link to product information](#)



- EXTRA -

## LINKING DEVICE



Linking device for Soft Edge 10  
[Link to product information](#)



# TAB





LES



**DESKS**

CLICK



CPH 90 Desk



CPH 190 Desk



Pyramid Table 01



T12 Table



Loop Stand Table

**MEETING TABLES / ROUND**

CLICK



AAT 20



CPH 20



CPH 25



CPH Deux 220



Loop Stand Round



Triangle Leg Table

**MEETING TABLES / RECTANGULAR**

CLICK



T12 Table



AAT 10



CPH 30



CPH 30 Extendable



Loop Stand Table



Pyramid Table 02



Triangle Leg Table

**CANTEEN & RESTAURANT TABLES**

CLICK



CPH Deux 210



CPH Deux 220



CPH 20



CPH 25



CPH 30



Pyramid Table 01



Pyramid Table 02



Pyramid Café Table 21



AAT 15



AAT 20



T12 Table

**HIGH TABLES**

CLICK



Aat 10 High



Aat 15 High



Aat 20 High



Cph 30 High



Cph 20 High



Revolver Table







- DESKS -

## CPH 90 DESK



CPH 90 Desk  
[Link to product information](#)



CPH 90 Desk  
[Link to product information](#)



- DESKS -

## CPH 190 DESK



CPH 190 Desk  
[Link to product information](#)



## PYRAMID TABLE 01



Pyramid Table 01  
[Link to product information](#)



Pyramid Table 01  
[Link to product information](#)





## T12 TABLE



T12 Table  
[Link to product information](#)



T12 Table  
[Link to product information](#)



## LOOP STAND TABLE



Loop Stand Table  
[Link to product information](#)



Loop Stand Table  
[Link to product information](#)





PURPLE PARIS



## AAT 20



AAT 20  
[Link to product information](#)



AAT 20  
[Link to product information](#)



## CPH 20 ROUND / CPH 25 ROUND



CPH 20 Round  
[Link to product information](#)



CPH 25 Round  
[Link to product information](#)





## CPH DEUX 220



CPH Deux 220  
[Link to product information](#)



CPH Deux 220  
[Link to product information](#)





A grey metal bookshelf with three shelves and two wooden drawers in the middle. The top shelf holds a stack of books, including "MARTA MÅAS-FJETERSTRÖM" and "A FEELING FOR LIFE". The middle shelf features a colorful mask, a stack of books including "HOW THEY WORK" and "The Art & Craft of Richard Woods", and a white ceramic container. The bottom shelf contains a stack of books, including "VERDENSKUNSTEN" and "CARLSBERG GLYPTOTEK I TIDEN".

A white oval table with four white legs and a wooden top. A pink book is resting on the table.

A white chair with a wooden base, partially visible on the left side of the image.

A white chair with a wooden base, partially visible on the right side of the image.

A decorative vase with a black and white pattern, holding a plant with green leaves.

A concrete wall with a textured surface and some dried vines or branches hanging from it.

## LOOP STAND ROUND



Loop Stand Round  
[Link to product information](#)



Loop Stand Round  
[Link to product information](#)





## TRIANGLE LEG TABLE



Triangle Leg Table  
[Link to product information](#)





## T12 TABLE



T12 Table  
[Link to product information](#)



T12 Table  
[Link to product information](#)



T12 Table  
[Link to product information](#)



## AAT 10



AAT 10  
[Link to product information](#)



AAT 10  
[Link to product information](#)



AAT 10  
[Link to product information](#)



## CPH 30 / CPH 30 EXTENDABLE



CPH 30  
[Link to product information](#)



CPH 30 Extendable  
[Link to product information](#)



CPH 30 Extendable  
[Link to product information](#)





## LOOP STAND TABLE



Loop Stand Table  
[Link to product information](#)



Loop Stand Table  
[Link to product information](#)



Loop Stand Table  
[Link to product information](#)



## PYRAMID TABLE 02



Pyramid Table 02  
[Link to product information](#)



Pyramid Table 02  
[Link to product information](#)







## TRIANGLE LEG TABLE



Triangle Leg Table  
[Link to product information](#)



ROBERT POLLOCK METROPOLIS  
MRS. DAVID BAILEY

## CPH DEUX 210



CPH Deux 210  
[Link to product information](#)



CPH Deux 210  
[Link to product information](#)



## CPH DEUX 220



CPH Deux 220  
[Link to product information](#)



CPH Deux 220  
[Link to product information](#)





## CPH 20 ROUND



CPH 20 Round  
[Link to product information](#)



CPH 20 Round  
[Link to product information](#)



## CPH 25 ROUND



CPH 25 Round  
[Link to product information](#)



CPH 25 Round  
[Link to product information](#)







## CPH 30



CPH 30  
[Link to product information](#)



CPH 30  
[Link to product information](#)



## PYRAMID TABLE 01 / PYRAMID TABLE 02



Pyramid Table 01  
[Link to product information](#)



Pyramid Table 02  
[Link to product information](#)



## PYRAMID CAFÉ TABLE 21



Pyramid Café Table 21  
[Link to product information](#)



Pyramid Café Table 21  
[Link to product information](#)





## AAT 15 / AAT 20



AAT 15  
[Link to product information](#)



AAT 20  
[Link to product information](#)



## T12 TABLE



T12 Table  
[Link to product information](#)



T12 Table  
[Link to product information](#)





## AAT 20 HIGH / AAT 10 HIGH / AAT 15 HIGH



AAT 20 High  
[Link to product information](#)



AAT 10 High  
[Link to product information](#)



AAT 20 High  
[Link to product information](#)



AAT 15 High  
[Link to product information](#)



## CPH 20 ROUND HIGH / CPH 30 HIGH



CPH 20 Round High  
[Link to product information](#)



CPH 30 High  
[Link to product information](#)



CPH 20 Round High  
[Link to product information](#)



CPH 30 High  
[Link to product information](#)



## REVOLVER TABLE



Revolver Table  
[Link to product information](#)



Revolver Table  
[Link to product information](#)





LOU



**NGE**



- LOUNGE OVERVIEW -

**SOFAS**

CLICK



Arbour



Pandarine with Cylindrical Armrest



Pandarine with Reclining Armrest



Silhouette



Silhouette high



Mags



Mags Soft



Mags Soft Low



AAL sofa



Can

**LOUNGE CHAIRS**

CLICK



Dorso



AAL 81



AAL 81 Soft



AAL 82



AAL 82 Soft



AAL 83



AAL 83 Soft



AAC 87



AAC 87 Soft



AAL 91



AAL 92



AAL 93



AAC 121



AAC 121 soft



AAC 121 soft duo



Dapper Lounge



Bernard



Uchiwa



Uchiwa Quilted



Can 1 seater

**OTTOMANS**

CLICK



Uchiwa



AAL 03



Mags

**COFFEE TABLES**

CLICK



Bella Coffee Table



DLM



Tray Table



Slit Table



Tulou Coffee Table



Eiffel Coffee Table



Rebar



Pyramid 51



CPH Deux 250





## ARBOUR ECO



Arbour Eco  
[Link to product information](#)



Arbour Eco  
[Link to product information](#)



Arbour Eco  
[Link to product information](#)



- SOFAS -

## ARBOUR



Arbour  
[Link to product information](#)



## PANDARINE



Pandarine with Cylindrical Armrest  
[Link to product information](#)



Pandarine with Reclining Armrest  
[Link to product information](#)



Pandarine with Cylindrical & Reclining Armrest  
[Link to product information](#)





## SILHOUETTE / SILHOUETTE HIGH



Silhouette 2 seater  
[Link to product information](#)



Silhouette 2 seater High  
[Link to product information](#)



Silhouette 3 seater  
[Link to product information](#)



Silhouette 3 seater High  
[Link to product information](#)



## MAGS / MAGS SOFT



Mags  
[Link to product information](#)



Mags  
[Link to product information](#)



Mags Soft Low Armrest  
[Link to product information](#)



Mags Soft  
[Link to product information](#)







- SOFAS -

## AAL SOFA



AAL Sofa  
[Link to product information](#)



AAL Sofa  
[Link to product information](#)



- SOFAS -

## CAN SOFA



Can 2 seater  
[Link to product information](#)



Can 3 seater  
[Link to product information](#)





## DORSO



Dorso  
[Link to product information](#)



Dorso  
[Link to product information](#)



Dorso  
[Link to product information](#)





ARREBUS  
AIRPORT

ERNEST HUS  
TERBLOK

## AAL 81 / AAL 81 SOFT / AAL 81 SOFT DUO



AAL 81  
[Link to product information](#)



AAL 81 Soft  
[Link to product information](#)



AAL 81 Soft Duo  
[Link to product information](#)



EN  
SAMTALE

MED  
JØRGEN  
LETH

*Til Christen og de venner  
på den gamle og de gamle  
på Tegløse*

UDGIVET AF  
BRUNNEN



## AAL 82 / AAL 82 SOFT / AAL 82 SOFT DUO



AAL 82  
[Link to product information](#)



AAL 82 Soft  
[Link to product information](#)



AAL 82 Soft Duo  
[Link to product information](#)





## AAL 83 / AAL 83 SOFT / AAL 83 SOFT DUO



AAL 83  
[Link to product information](#)



AAL 83 Soft  
[Link to product information](#)



AAL 83 Soft Duo  
[Link to product information](#)





## AAL 87 / AAL 87 SOFT / AAL 87 SOFT DUO



AAL 87  
[Link to product information](#)



AAL 87 Soft  
[Link to product information](#)



AAL 87 Soft Duo  
[Link to product information](#)





## AAL 91 / AAL 92 / AAL 93



AAL 91  
[Link to product information](#)



AAL 92  
[Link to product information](#)



AAL 93  
[Link to product information](#)



## AAC 121



AAC 121 Chair  
[Link to product information](#)



AAC 121 Soft Chair  
[Link to product information](#)



AAC 121 Soft Duo Chair  
[Link to product information](#)





- LOUNGE CHAIRS -

## DAPPER LOUNGE



Dapper Lounge  
[Link to product information](#)



Dapper Lounge  
[Link to product information](#)



## BERNARD



Bernard  
[Link to product information](#)



Bernard  
[Link to product information](#)





## UCHIWA / UCHIWA QUILTED



Uchiwa  
[Link to product information](#)



Uchiwa Quilted  
[Link to product information](#)





## CAN 1 SEATER



Can 1 seater  
[Link to product information](#)



Can 1 seater  
[Link to product information](#)





- OTTOMANS -

## UCHIWA OTTOMAN



Uchiwa Ottoman  
[Link to product information](#)



Uchiwa Ottoman  
[Link to product information](#)



- OTTOMANS -

## AAL 03 OTTOMAN



AAL 03 Ottoman  
[Link to product information](#)



AAL 03 Ottoman  
[Link to product information](#)





## MAGS OTTOMAN



Mags Ottoman X-small 01  
[Link to product information](#)



Mags Ottoman Small 02  
[Link to product information](#)

SHAPES  
OF  
RIVERS



## BELLA COFFEE TABLE



Bella Coffee Table  
[Link to product information](#)



Bella Coffee Table  
[Link to product information](#)



Bella Coffee Table  
[Link to product information](#)





## DLM



DLM  
[Link to product information](#)



DLM  
[Link to product information](#)



DLM  
[Link to product information](#)



DLM XL  
[Link to product information](#)



## TRAY TABLE



Tray Table  
[Link to product information](#)



Tray Side Table  
[Link to product information](#)



Tray Coffee Table  
[Link to product information](#)





## SLIT TABLE



Slit Table Round  
[Link to product information](#)



Slit Table Oblong  
[Link to product information](#)



Slit Table XL  
[Link to product information](#)





## TULOU COFFEE TABLE



Tulou Coffee Table Ø55 cm  
[Link to product information](#)



Tulou Coffee Table Ø75 cm  
[Link to product information](#)





## EIFFEL COFFEE TABLE



Eiffel Coffee Table Square  
[Link to product information](#)



Eiffel Coffee Table Rectangular  
[Link to product information](#)



## REBAR COFFEE TABLE



Rebar Coffee Table  
[Link to product information](#)



Rebar Coffee Table  
[Link to product information](#)



Rebar Coffee Table  
[Link to product information](#)





...TAT V

WRITTEN IN THE WEST  
REVISTED

ODS 多

Schirmer/Mosel

## PYRAMID COFFE TABLE 51



Pyramid Coffe Table 51  
[Link to product information](#)



Pyramid Coffe Table 51  
[Link to product information](#)



## CPH DEUX 250



CPH Deux 250  
[Link to product information](#)



CPH Deux 250 Round  
[Link to product information](#)





# NEW C

gate



ORDER

Restaurant  
Restaurant



**NEW ORDER STORAGE**

CLICK



NO Combination 201



NO Combination 203



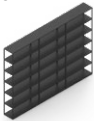
NO Combination 302



NO Combination 401

**NEW ORDER SPACE DIVIDER**

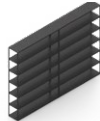
CLICK



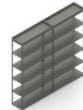
NO Spade Divider



NO Spade Divider



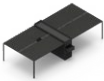
NO Spade Divider



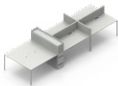
NO Spade Divider

**NEW ORDER WORKSTATION**

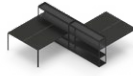
CLICK



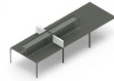
NO Workstation



NO Workstation



NO Workstation



NO Workstation

**NEW ORDER DESK**

CLICK



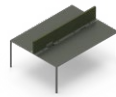
NO Desk



NO Desk



NO Desk



NO Desk

**NEW ORDER OFFICE**

CLICK



NO Table Combination 401



NO Office



NO Office



NO Office

**NEW ORDER TROLLEY**

CLICK



NO Trolley A



NO Trolley B

**NEW ORDER MEETING**

CLICK



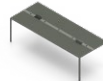
NO Table



NO Table



NO Table



NO Table

**NEW ORDER MEETING (HIGH TABLE)**

CLICK



NO High Table



NO High Table



NO High Table



NO High Table



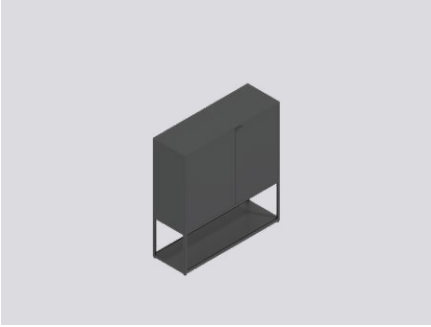


The New...  
Olafur Eliasson  
Rummets bevægelse  
ER

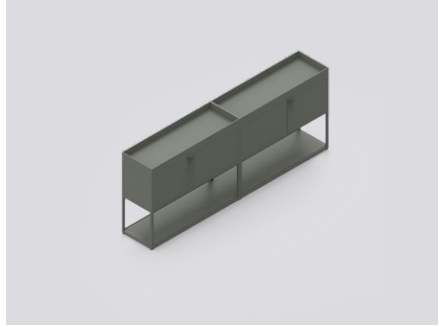
ROOM 606  
Roman & Erwan Bourasdic  
Works

Olafur Eliasson  
Rummets bevægelse  
ER

## NEW ORDER STORAGE



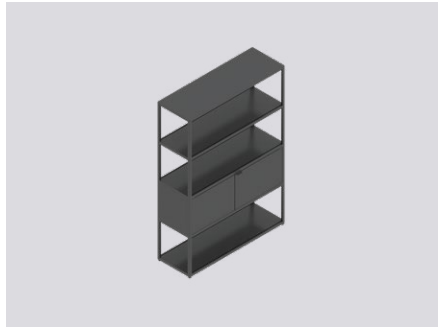
NO Combination 201  
[Link to product information](#)



NO Combination 203  
[Link to product information](#)



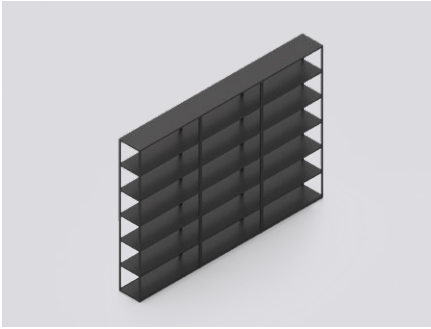
NO Combination 302  
[Link to product information](#)



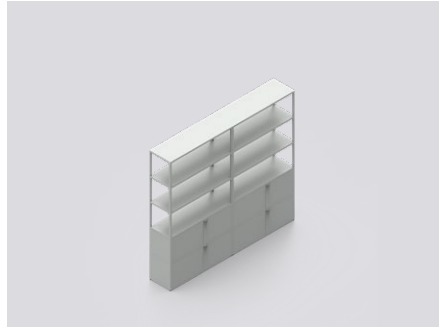
NO Combination 401  
[Link to product information](#)



## NEW ORDER SPACE DIVIDER



NO Space Divider  
[Link to product information](#)



NO Space Divider  
[Link to product information](#)



NO Space Divider  
[Link to product information](#)



NO Space Divider  
[Link to product information](#)

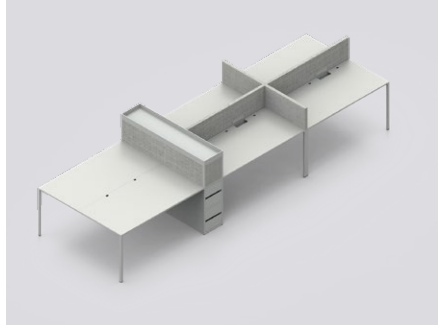




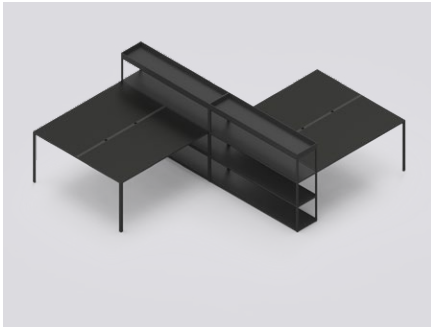
## NEW ORDER WORKSTATION



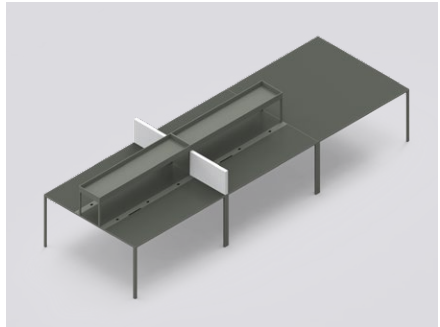
NO Workstation  
[Link to product information](#)



NO Workstation  
[Link to product information](#)



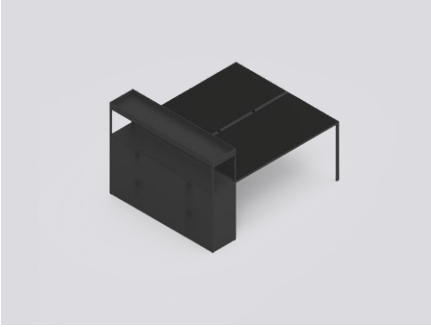
NO Workstation  
[Link to product information](#)



NO Workstation  
[Link to product information](#)



## NEW ORDER DESK



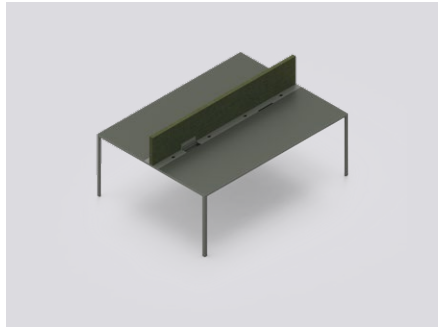
NO Desk  
[Link to product information](#)



NO Desk  
[Link to product information](#)



NO Desk  
[Link to product information](#)



NO Desk  
[Link to product information](#)





## NEW ORDER OFFICE



NO Office  
[Link to product information](#)



NO Office  
[Link to product information](#)



NO Office  
[Link to product information](#)



NO Office  
[Link to product information](#)



## NEW ORDER TROLLEY

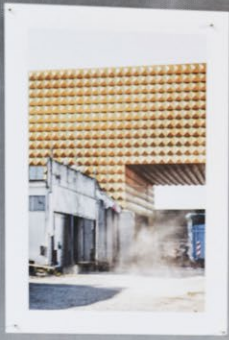


NO Trolley A  
[Link to product information](#)

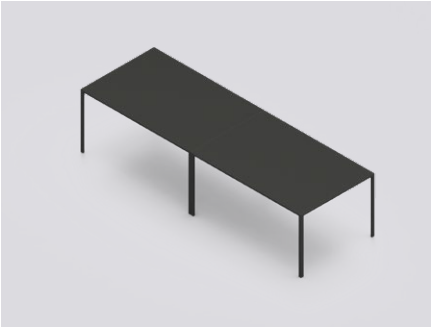


NO Trolley B  
[Link to product information](#)





## NEW ORDER MEETING



NO Table  
[Link to product information](#)



NO Table  
[Link to product information](#)



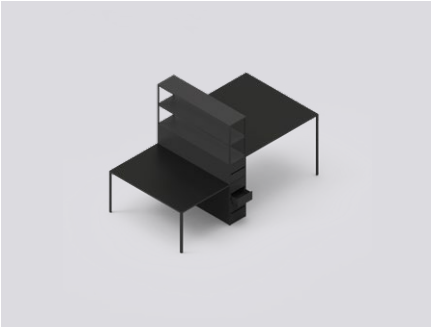
NO Table  
[Link to product information](#)



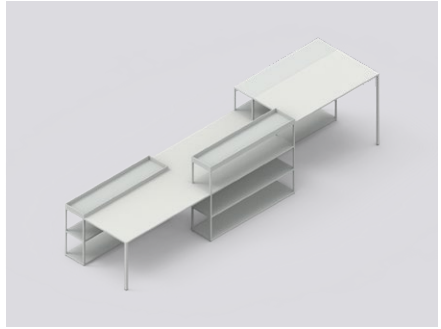
NO Table  
[Link to product information](#)



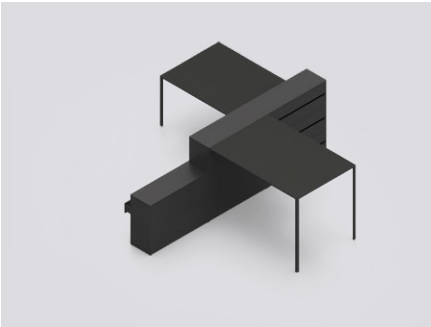
## NEW ORDER MEETING (HIGH TABLE)



NO High Table  
[Link to product information](#)



NO High Table  
[Link to product information](#)



NO High Table  
[Link to product information](#)



NO High Table  
[Link to product information](#)





# WARD



ROBE



## LOOP STAND



Loop Stand Hall  
[Link to product information](#)



Loop Stand Wardrobe  
[Link to product information](#)





OUTD



DOOR







- OUTDOOR OVERVIEW -

**SEATING**

CLICK



Palissade Chair



Palissade Ottoman



Palissade Stool



Palissade Bench



Palissade Bar Stool



Hee Dining Chair



Hee Lounge Chair



Hee Bar Stool



Élémentaire Chair



13Eighty Chair

**TABLES**

CLICK



Palissade Table



Palissade Cone Table



Terrazzo Table



Neu Table

**LIGHTING**

CLICK



PC Portable





Vivoli Fickson

ENVIRONMENT

## PALISSADE



Palissade Chair  
[Link to product information](#)



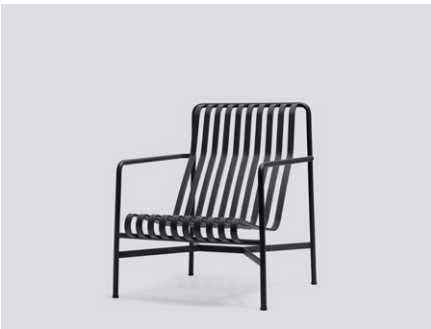
Palissade Armchair  
[Link to product information](#)



Palissade Dining Armchair  
[Link to product information](#)



Palissade Lounge Chair low  
[Link to product information](#)



Palissade Lounge Chair high  
[Link to product information](#)





## PALISSADE



Palissade Ottoman  
[Link to product information](#)



Palissade Stool  
[Link to product information](#)



Palissade Bench  
[Link to product information](#)



Palissade Dining Bench  
[Link to product information](#)



Palissade Dining Bench without armrest  
[Link to product information](#)



Palissade Lounge Sofa  
[Link to product information](#)





## HEE



Hee Dining Chair  
[Link to product information](#)



Hee Lounge Chair  
[Link to product information](#)



Hee Bar Stool  
[Link to product information](#)





## ÉLÉMENTAIRE CHAIR



Élétaire Chair  
[Link to product information](#)



Élétaire Chair with Seat pad  
[Link to product information](#)





## 13EIGHTY



13eighty Armchair  
[Link to product information](#)



13eighty Chair  
[Link to product information](#)





## PALISSADE TABLE



Palissade Table  
[Link to product information](#)



Palissade Table  
[Link to product information](#)



Palissade Middle Leg  
[Link to Product information](#)





## PALISSADE CONE TABLE



Palissade Cone Table  
[Link to product information](#)



Palissade Cone Table  
[Link to product information](#)



Palissade Cone Table high  
[Link to product information](#)





## TERRAZZO



Terrazzo Table Round  
[Link to product information](#)



Terrazzo Table Square  
[Link to product information](#)



Terrazzo High Table  
[Link to product information](#)





## NEU TABLE



Neu Table Round  
[Link to product information](#)



Neu Table Square  
[Link to product information](#)



Neu Table High  
[Link to product information](#)



Neu Table High  
[Link to product information](#)





## PC PORTABLE



PC Portable  
[Link to Product information](#)



PC Portable  
[Link to Product information](#)





# LIGHT



TING

**PENDANTS**

CLICK



Pao Steel Pendant



Nelson Bubble  
Pendant



PC Linear



PC Pendant



Bonbon



30 Degrees



Sinkier Pendant

**TASK LAMPS**

CLICK



PC Task Lamp



Fifty-Fifty Mini



Fifty-Fifty  
Table Lamp

**TABLE LAMPS**

CLICK



PC Table Lamp



PC Portable



Bonbon



Marselis Table Lamp



Matin Table Lamp



Turn On



Cloche

**FLOOR LAMPS**

CLICK



Fifty-Fifty Floor Lamp



Marselis Floor Lamp



Rope Trick

**WALL LAMPS**

CLICK



Fifty-Fifty Wall



PC Wall Lamp



Noc



Nelson Bubble Wall Sconce





## PAO STEEL PENDANT



Pao Steel Pendant 230  
[Link to Product information](#)



Pao Steel Pendant 350  
[Link to Product information](#)



Pao Steel Pendant 470  
[Link to Product information](#)



## NELSON BUBBLE PENDANT



Nelson Ball Bubble Pendant  
[Link to Product information](#)



Nelson Saucer Bubble Pendant  
[Link to Product information](#)



Nelson Cigar Bubble Pendant  
[Link to Product information](#)



Nelson Saucer Crisscross Bubble Pendant  
[Link to Product information](#)





## PC LINEAR



PC Linear  
[Link to Product information](#)



PC Linear  
[Link to Product information](#)



## PC PENDANT



PC Pendant S  
[Link to Product information](#)



PC Pendant M  
[Link to Product information](#)



PC Pendant L  
[Link to Product information](#)





## BONBON



Bonbon Pendant 380  
[Link to Product information](#)



Bonbon Pendant 380  
[Link to Product information](#)



Bonbon Pendant 320  
[Link to Product information](#)



Bonbon Pendant 500  
[Link to Product information](#)



## 30 DEGRESS PENDANT



30 Degress  
[Link to Product information](#)



30 Degress  
[Link to Product information](#)





## SINKER PENDANT



Sinker  
[Link to Product information](#)



Sinker  
[Link to Product information](#)



## PC TASK LAMP



PC task lamp  
[Link to Product information](#)



PC task lamp  
[Link to Product information](#)





## FIFTY-FIFTY



Fifty-Fifty Mini  
[Link to Product information](#)



Fifty-Fifty Table  
[Link to Product information](#)



DREAMLANDS: IMMERSIVE CINEMA AND A  
PHILIPPE PARRENDO  
RUM | TRANSFORMATIC



## PC TABLE / PC PORTABLE



PC Table S  
[Link to Product information](#)



PC Table L  
[Link to Product information](#)



PC Portable  
[Link to Product information](#)





## BONBON



Bonbon Table 380  
[Link to Product information](#)



Bonbon Table 380  
[Link to Product information](#)



Bonbon Table 320  
[Link to Product information](#)



Bonbon Table 500  
[Link to Product information](#)



## MARSELIS TABLE LAMP



Marselis Table Lamp  
[Link to Product information](#)



Marselis Table Lamp  
[Link to Product information](#)





## MATIN TABLE LAMP



Matin Table Lamp S  
[Link to Product information](#)



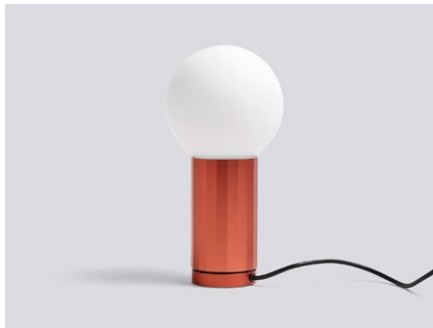
Matin Table Lamp L  
[Link to Product information](#)



## TURN ON



Turn On  
[Link to Product information](#)



Turn On  
[Link to Product information](#)





## CLOCHE



Cloche  
[Link to Product information](#)



Cloche  
[Link to Product information](#)



Cloche  
[Link to Product information](#)



Cloche  
[Link to Product information](#)



## FIFTY-FIFTY FLOOR LAMP



Fifty-Fifty Floor Lamp  
[Link to Product information](#)



Fifty-Fifty Floor Lamp  
[Link to Product information](#)





## MARSELIS FLOOR LAMP



Marselis Floor Lamp  
[Link to Product information](#)



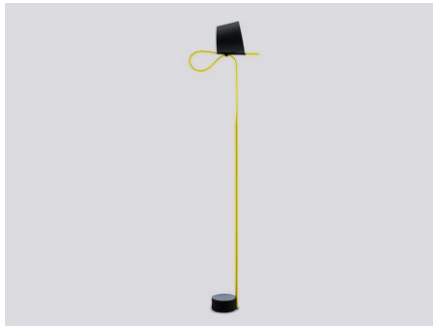
Marselis Floor Lamp  
[Link to Product information](#)



## ROPE TRICK



Rope Trick  
[Link to Product information](#)



Rope Trick  
[Link to Product information](#)





## FIFTY-FIFTY WALL



Fifty-Fifty Wall  
[Link to Product information](#)



Fifty-Fifty Wall  
[Link to Product information](#)



## PC WALL LAMP



PC Single Arm Wall Lamp  
[Link to Product information](#)



PC Double Arm Wall Lamp  
[Link to Product information](#)





## NOC



Noc Wall  
[Link to Product information](#)



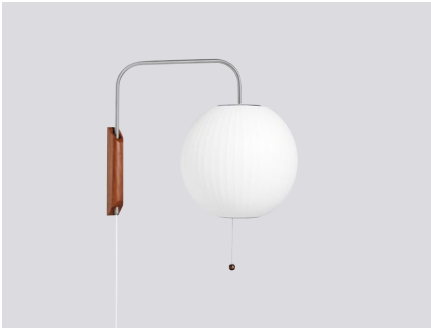
Noc Wall Button  
[Link to Product information](#)



Noc Clamp  
[Link to Product information](#)



## NELSON BUBBLE LAMP



Nelson Ball Wall Sconce Cabled  
[Link to Product information](#)



Nelson Cigar Wall Sconce Cabled  
[Link to Product information](#)



Nelson Pear Wall Sconce Cabled  
[Link to Product information](#)



Nelson Saucer Wall Sconce Cabled  
[Link to Product information](#)



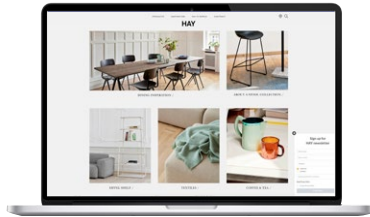
# TOO



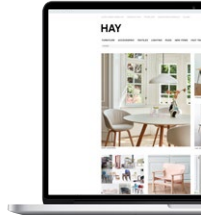
OL'S



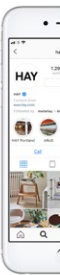
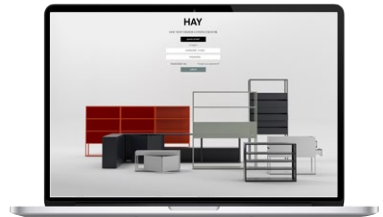
hay.com



hayb2b



New Order  
configurator



.com

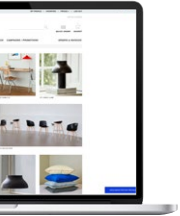
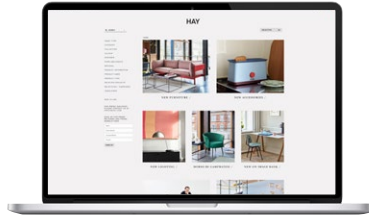
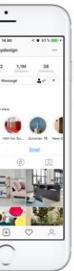
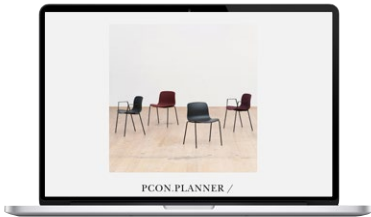


Image bank



pCon.planner



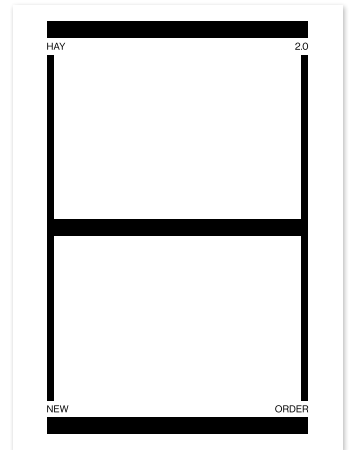
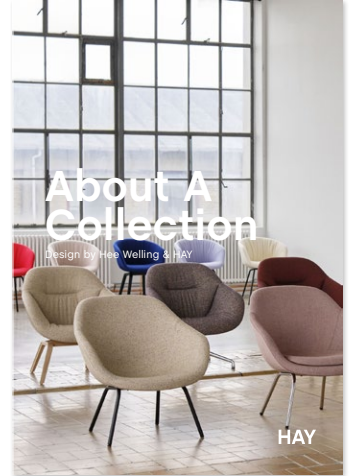
Social Media

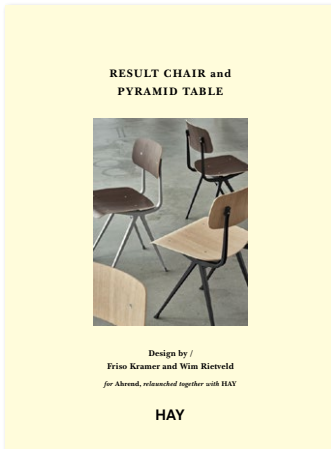
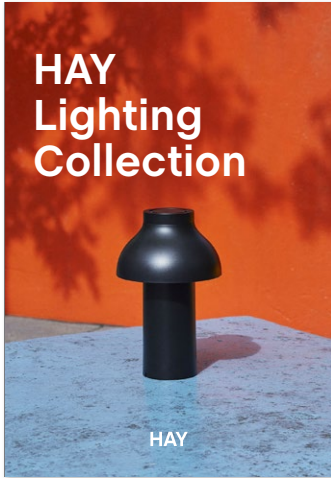
Instagram @haydesign

LinkedIn

Facebook







3d & 2d files



Care & maintenance



Certif



Instruction manuals



Light source overview



Mags modu



Photometric files



Revit files



Seating



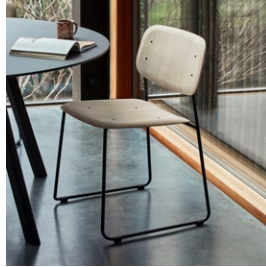
icates



Energy labels



Glider overview



le overview



Product fact sheets



Product presentations



overview



Sustainability



Textiles





COPYRIGHT / HAY 2020

[WWW.HAY.COM](http://WWW.HAY.COM)

**HAY**